

# CABINSTONE



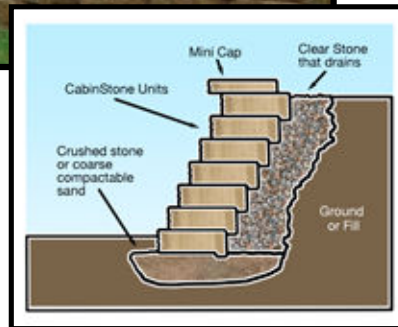
## CabinStone

- Mortarless, pinless, stackable wall system
- Engineered to built curved or straight walls
- Walls can be built up to 32" high
- Common uses are tree rings, flower beds, and terraces
- Has a lip on its back-bottom side to allow a 1" setback to each layer on the wall
- Creates elegance and beauty to any landscape project
- Available to meet today's demanding schedule
- Provides a lifetime of satisfaction



CABINSTONE Units	
Shape:	Wedge Shaped / Curved Split Face
Size:	4" High, 12" Wide, 8 1/2" Deep
Area:	.33 Square Feet (3 Blocks = 1 Square Foot)
Setback:	1"
Weight:	Approximately 26 lbs.
Design:	Units will create straight or curved walls with a radius of approximately 30".
Height:	Can build up to 32" in height without special engineering.*
Circles:	12 units will make a circle with an inside diameter of approx. 33" and an outside diameter of approx. 50". Because of the bottom "lip", stacking blocks in a circle will result in tightening diameters and probable need for block modification. To stack units in a circle, rear bottom lips would need to be removed and stacked vertically to keep a consistent diameter.

Mini Caps	
Size:	Front: 8" Wide, Back: 6" Wide Depth: 9", Height: 3"
Face:	Straight Split
Weight:	15 lbs.
Area:	Installed in a reversing pattern, 7" lineal of cap
Pallet:	192 PCS. per pallet – Shipped in pairs designed for easy job site split into individual units.



Versatile and easy to install, available in 4 standard colors to compliment any design.

## Installing Instructions

1. Dig a footing area about 4" x 16" below the first course of block. Fill with crushed stone and compact with hand or power compactor.
2. Lay wall units with retaining lip down and place next to each other. Make sure to place this unit level and build toward the corners.
3. Second layer, place units over seams of wall units below in a running bond pattern. To stay on bond some trimming of the block may be necessary.
4. Backfill as you go using clean rock for drainage behind the wall units, compact as you go.
5. For top course, use all weather construction adhesive to glue on Mini Cap units.

\* **Note:** If soil, drainage, water flow, and surrounding load conditions are questionable, the use of geo-grid and larger Rockwood Retaining Wall units should be considered. We recommend consulting with an engineer.

▶ See reverse side for available **COLOR CHOICES**.

Distributed By

**Consumers**  
  
**CONCRETECORPORATION**  
[www.ConsumersConcrete.com](http://www.ConsumersConcrete.com)

# Color Options



**Antique**



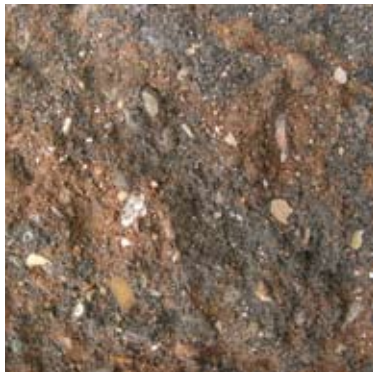
**Granite**



**Montana**



**Country**



**Brownstone**  
(Special Order)



**Earth**  
(Special Order)



**Sandstone**  
(Special Order)