



WALLS and PAVERS

Consumers



CONCRETE CORPORATION
www.consumersconcrete.com



Contents

SECTION	PAGE
Retaining Walls.....	3-12
Garden Walls.....	13-18
Pavers	19-27
Outdoor Living.....	28-33
Cross Section Guide.....	34-35

The information in this brochure is illustrative. Always consider current specifications, availability, and actual samples before making final selections.

About Us

Consumers Concrete is a multigenerational family-owned company that has been a trusted source of quality products throughout Michigan since 1933. We are an industry leader of concrete masonry lines that include PermaGrind™ and Bella Brick™ that is produced in Wyoming, a wet cast division in Battle Creek producing Redi-Rock® wall units and expansive retaining wall production of Rockwood®, Allan Block® and pavers in Kalamazoo. In addition to our manufactured products locations, we operate 18 strategically placed ready mix concrete plants throughout many Southwest Michigan regions.

As an industry leader we have completed a recent expansion of our manufacturing capabilities in Kalamazoo with the construction of a new state of the art block production facility by making an investment into our community for future generations.



Retaining Walls

Pages 3-12



SECTION	PAGE
Rockwood® Classic	4-5
AB® Classic Collection	6-7
AB® Metro.....	8
Redi-Rock™ Steps.....	9
Redi-Rock™	10-11
StoneHedge 6®	12

The information in this brochure is illustrative. Always consider current specifications, availability, and actual samples before making final selections.



What is a Retaining Wall

“Retaining Walls” are built to be tough and to last. Many of these wall systems are engineered to hold the ground in place to minimize or eliminate erosion. They are also used to “carve out” usable space in a hillside area where erosion control is needed. Retaining walls are typically installed by professional contractors. The use of professional engineering services is also advised for retaining walls over 4 ft. in height and for any nonstandard site or soil conditions.





ROCKWOOD® Classic® 6

Our Rockwood® Classic 6 system is designed with the professional wall builder in mind. With a full 18" wide face and 12" depth, the 6" high units provide .75 sq. ft. of wall coverage. The robust Classic system provides desired curb appeal to any property with its timeless beauty and simplicity. Available in two face designs and 5 standard colors.



Classic® Split Straight



Classic® Split Beveled

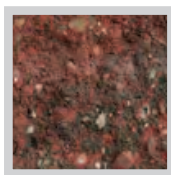


Universal Cap

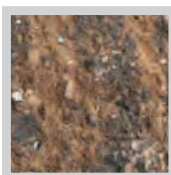


Natural Base Block

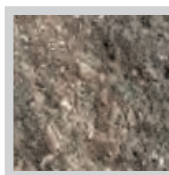
Standard Colors



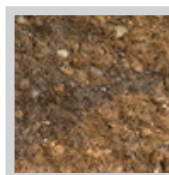
Antique



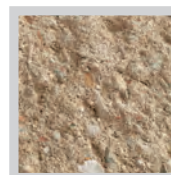
Country



Granite



Montana



Natural

Description	Size HxWxD (Inches)	Sq. Ft. Unit	Weight (Pounds)	Units Pallet	Sq. Ft. Pallet	Weight Pallet	Set Back
Classic 6" Straight	6 x 18 x 12	0.75	63	48	36	3,072	3/4" / 6°
Classic 6" Beveled	6 x 18 x 12	0.75	60	48	36	2,880	3/4" / 6°
Universal Cap	3 x 18/14 x 10.5	0.375	40	48	18	1,920	
Base Block - Beveled	6 x 18 x 12	0.75	60	48	36	2880	



CONCRETE CORPORATION

6 consumersconcrete.com



AB® Classic Collection

The **AB® Collection** gives a smooth fluid finish to any outdoor living space. Enjoy the beauty and durability of this collection's classic cut stone look that adds distinguished style to any landscape.



**AB Metro
Cap**



AB Cap

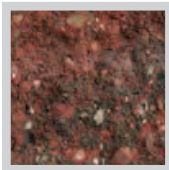


AB Corner

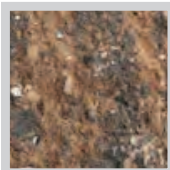


AB Classic

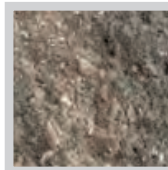
Standard Colors



Antique



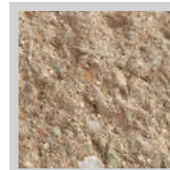
Country



Granite



Montana



Natural

Description	Size HxWxD (Inches)	Sq. Ft. Unit	Weight (Pounds)	Units Pallet	Sq. Ft. Pallet	Weight Pallet	Set Back
AB Classic	8 x 18 x 12	0.98	75	40	39.2	3,000	6°
AB Classic Corner (L&R - Sold in Pairs)	8 x 14 x 9		112 Per Pair	27 Pairs		3,024	
AB Classic Cap	4 x 18 x 12	0.5	55	48	24	2,690	



AB® Metropolitan

The AB Metropolitan Collection offers a smooth, architectural look and style for a subtle marbled look with a contemporary feel. The smooth clean lines of this mid-century modern style maintains the trusted performance of all AB Retaining Wall Systems. This style offers a solution for a variety of wall applications, ranging from small residential to large-scale commercial projects. Enjoy the beauty and durability of this collection's look that adds distinguished style to any outdoor landscape.



AB Metro
Cap



AB Metro
Classic

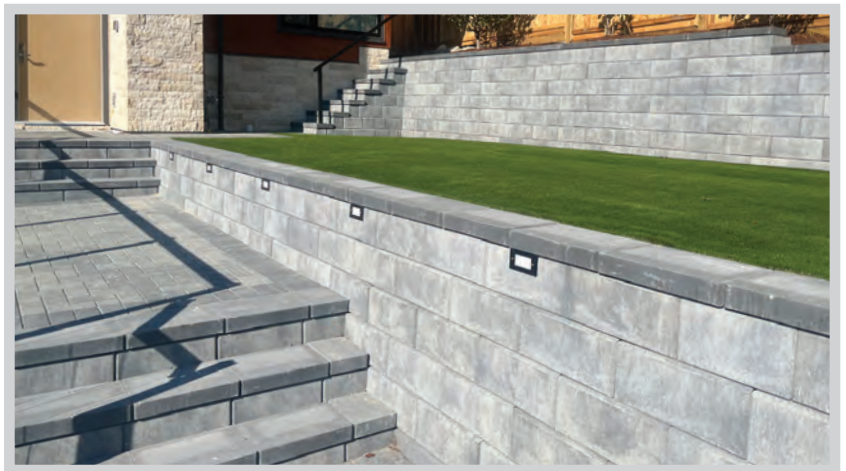


AB Metro
Corner



Country

Granite



Description	Size HxWxD (Inches)	Sq. Ft. Unit	Weight (Pounds)	Units Pallet	Sq. Ft. Pallet	Weight Pallet	Set Back
AB Metro Classic	8 x 18 x 12	0.98	75	40	39.2	3,000	6°
AB Metro Corner (L&R - Sold in Pairs)	8 x 14 x 9		110 Per Pair	27 Pairs		3,024	
AB Metro Cap	4 x 18 x 12	0.5	55	48	24	2,690	



CONCRETE CORPORATION
consumersconcrete.com

Redi-Rock™ Steps

Redi-Rock™ products capture the “Essence of Natural Rock” with textures so natural, many mistake it for quarried stone. Redi-Rock™ large scale 7” x 26” x 48” steps are available. Finished on three edges and at ideal tread height, these units make a great step for use in the Redi-Rock wall systems. These beautiful and solid units provide a step solution in almost any project.



Description	Size HxWxD (Inches)	Weight (Pounds)	Units Pallet	Weight Pallet
Step	7 x 26 x 48	650	5	3,250



Shown in Cobblestone Pattern



Shown in Ledgerstone Pattern





Redi-Rock™

Redi-Rock™ products capture the “Essence of Natural Rock” with textures so natural, many mistake it for quarried stone. Columns, free standing walls, steps and retaining walls are all possible in a variety of textures cast from molds made from real stone and colors that complement your surroundings. Redi-Rock™ units are large in scale to handle the tough jobs. This engineered system, which is typically designed as a gravity wall system, is compatible with the aesthetics of most residential and commercial projects. You can count on the quality of Redi-Rock™ manufactured by Consumers Concrete. We use a dedicated concrete mix designed for strength and durability that is produced fresh for every Redi-Rock™ block. We never use repurposed concrete.



Ledgestone Pattern (Top Stone Shown)

The random texture on a Ledgestone block makes the individual blocks nearly indistinguishable, while giving the impression of a natural stone wall. The Ledgestone block has 5.75 sq.ft. of face.

Cobblestone Pattern (Top Stone Shown)

When you choose Redi-Rock™ Cobblestone texture, you get the structural capabilities of a large block retaining wall system with a smaller scale look. The Cobblestone texture block has the appearance of six smaller blocks on each 5.75 sq.ft. face.



Description	Size HxWxD (Inches)	Sq. Ft. Unit	Weight (Pounds)	Units Pallet	Weight Pallet
Cobblestone Pattern	18 x 46 x 41*	5.75	2300		
Ledgestone Pattern	18 x 46 x 41*	5.75	2300		

*Data for middle block - sizes and weight vary by unit type



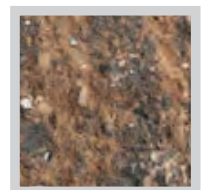
StoneHedge 6[®] (Free Standing Wall)

Versatile, durable and beautiful are the best ways to describe **StoneHedge 6[®]** by Rockwood[®]. This 2 sided split wall system is perfect for retaining walls, freestanding walls and even garden and seat walls. The 2 sided feature make it a perfect choice for partition and privacy walls. StoneHedge 6[®] is also able to integrate with the Rockwood[®] Classic 6[®] system. This makes it one of the most adaptable systems available.



StoneHedge 6[®]

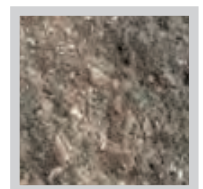
Standard Colors



Country



Universal Cap



Granite



Description	Size HxWxD (Inches)	Sq. Ft. Unit	Weight (Pounds)	Units Pallet	Sq. Ft. Pallet	Weight Pallet
Straight	6 x 18 x 10	0.75	65	40	30	2,560
Universal Cap	3 x 18/14 x 10.5	0.375	40	48	18	1,920

Consumers

CONCRETE CORPORATION

consumersconcrete.com

Garden Walls

Pages 13-18



SECTION

PAGE

Lakeland® Tumbled Walls & Riverland® Walls....14-15

CabinStone16

Rockwood® E-Z Wall II™17

The information in this brochure is illustrative. Always consider current specifications, availability, and actual samples before making final selections.



What is a Garden Wall

“Garden Walls” can only be built so high, typically 24” to 32” is what is considered safe for a garden wall, but each type of wall should be checked for its maximum height allowance before being used on a project. Garden walls are NOT typically engineered to prevent erosion. They are used around a home or small garden. With a little work, these walls can be constructed by a home owner without a high level of engineering expertise.



Grand Gas
Fire Ring Kit



Lakeland® Tumbled Walls & Riverland® Walls

Lakeland's earthy colors and aged appearance will enhance the style of any home. The heart of this system is a handy 4" x 8" x 12" unit. When combined with other sizes, this multi-piece system creates the enviable look of an old-world country estate.



Large Unit



Medium Unit



Small Unit

Riverland® is a multi-sized curved system; sold as sets, that allows for easy construction of 8' radius retaining walls and seat walls. A companion product to the Lakeland® system, Riverland® is sure to beautify your outdoor space.



Large Radius Unit



Medium Radius Unit



Small Radius Unit

Riverland Radius Sets



Antique



Country



Granite



Montana

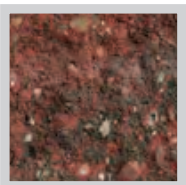


Grand Firepit Block
19 Wedge Block per course
4" x 8" / 6" x 8"

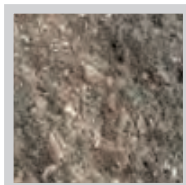
Description	Size HxWxD (Inches)	Sq. Ft. Unit	Weight (Pounds)	Units Pallet	Sq. Ft. Pallet	Weight Pallet
Small	4 x 4 x 8	0.33	31	96	32	2,976
Medium	4 x 8 x 8	Set	Set	Sets	Set	Set
Large	4 x 8 x 12	0.33	31	96	32	2,976
Wedge	4 x 8/6 x 8		17	168		2,905
Small Radius Set	4 x 8 x 8					
Medium Radius Set	4 x 12 x 8	1.0	90.0	30	30	2,750
Large Radius Set	4 x 16 x 8	Set	Set	Sets		



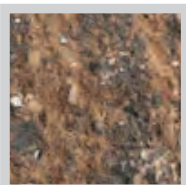
Standard Colors



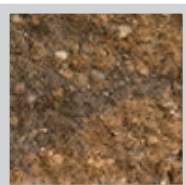
Antique



Granite

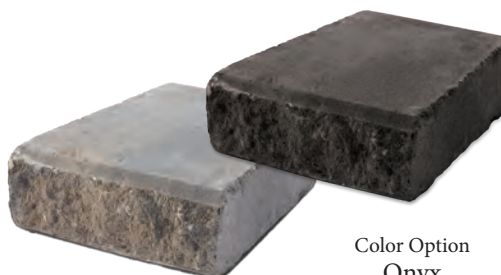


Country



Montana

CabinStone is sure to add elegance and beauty to any landscape project. Designed for easy installation on straight or curved walls, it is limited only by your imagination. Its handy 4" high x 11.5" wide x 8.5" deep size makes it a convenient unit to work with. The reversible 3" high x 8" wide / 6" back x 9" deep Mini-Cap™ is ideal for finishing off your wall and is manufactured in the same beautiful colors.



Mini-Cap™

Color Option
Onyx
(Mini Cap Only)



CabinStone

Description	Size HxWxD (Inches)	Sq. Ft. Unit	Weight (Pounds)	Units Pallet	Sq. Ft. Pallet	Weight Pallet	Set Back
CabinStone	4 x 11.5 x 8.5	0.33	26.5	96	31.68	2,594	1"
Mini-Cap™	3 x 8 / 6 x 9	0.145 avg.	15	192	27.84	2,900	



CONCRETE CORPORATION
consumersconcrete.com

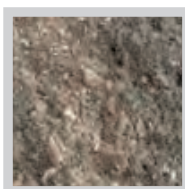
ROCKWOOD® E-Z Wall II™



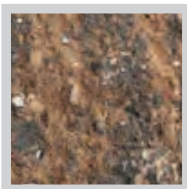
Standard Colors



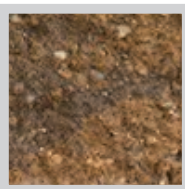
Antique



Granite



Country

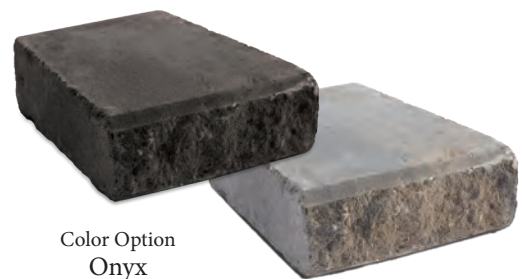


Montana

Build the garden area of your dreams! The angled design of **E-Z Wall II™** makes it easy to create curves and corners. With its beautiful split straight finish, it provides a clean look with unlimited design capabilities. This versatile 4.5" high x 8" wide x 8.5" deep unit is a great choice for many types of outdoor projects. The reversible 3" high x 8" wide x 9" deep Mini-Cap™ is often used to give the project a wonderful finished appearance.



E-Z Wall II™



Color Option
Onyx
(Mini Cap Only)

Mini-Cap™

Description	Size HxWxD (Inches)	Sq. Ft. Unit	Weight (Pounds)	Units Pallet	Sq. Ft. Pallet	Weight Pallet	Set Back
EZ Wall II™	4.5 x 8 x 8.5	0.25	23	120	30	2,810	3/4"
Mini-Cap™	3 x 8 / 6 x 9	0.145 avg.	15	192	27.84	2,900	

Consumers

CONCRETE CORPORATION

consumersconcrete.com



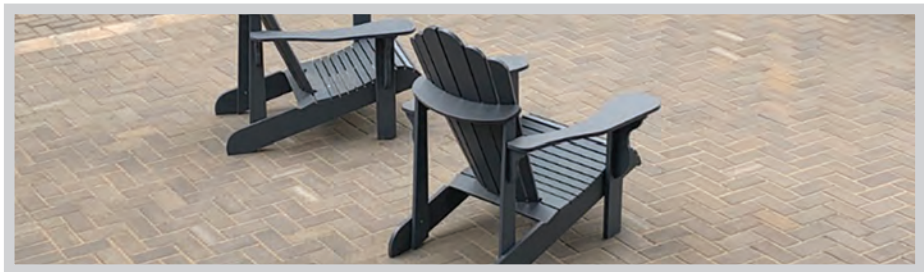
Consumers

CONCRETE CORPORATION

consumersconcrete.com



SECTION	PAGE
Canyon Stone Tumbled Pavers	20-21
Serano Smooth Pavers	22-23
Heritage Pavers	24-25
GeoCeramica	26



The information in this brochure is illustrative. Always consider current specifications, availability, and actual samples before making final selections.

Interlocking concrete paving stones or “pavers” as they are simply known are one of the most enduring and trusted ways to make your outdoor living space more beautiful. Our pavers come in tumbled and non-tumbled styles and offer virtually unlimited design choices. Our pavers coordinate well with our garden and retaining walls and are an excellent base for our Outdoor Living and Outdoor Kitchen Kits. You can be confident our pavers are manufactured to the highest standards and will provide a beautiful and durable surface for many years to come.



Canyon Stone Tumbled Pavers



Standard Colors



Antique



Granite



Country



Montana

Enjoy the warmth and beauty of **Canyon Stone** tumbled pavers. The naturally aged look and texture of Canyon Stone is sure to please. Manufactured in the same beautiful colors as Lakeland™ and Riverland™ wall lines, Canyon Stone is sure to coordinate and complete your outdoor space.



Large



Medium



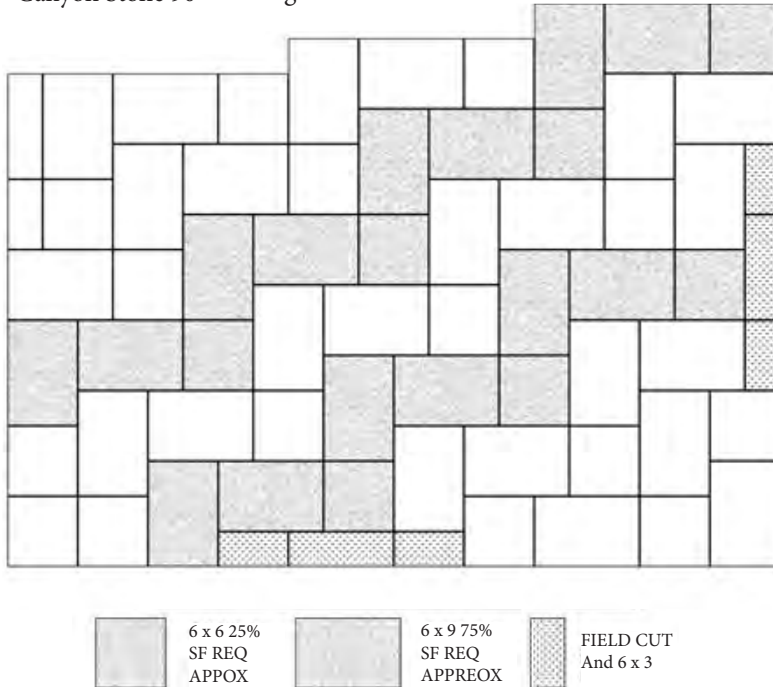
Small



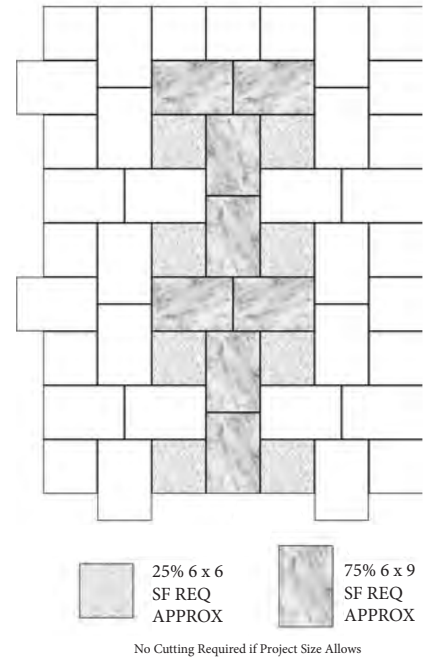
CONCRETE CORPORATION
consumersconcrete.com

Patterns - for Canyon Stone Tumbled Pavers

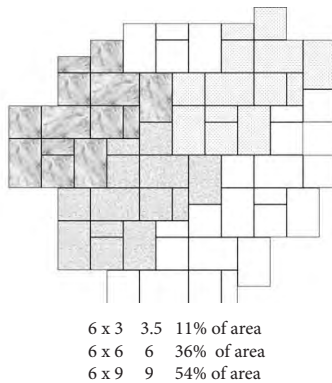
▼ Canyon Stone 90° Herringbone Pattern



▼ Canyon Tumbled Paver 6 x 6 and 6 x 9 Canyon Pattern

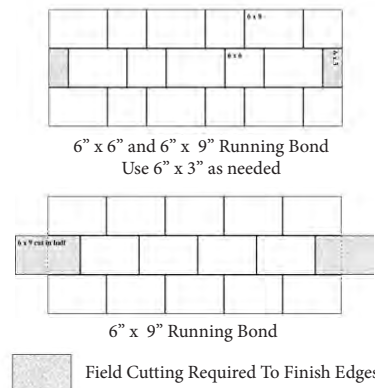


▼ Canyon Three Size Random Pattern



Note: Trim and use edge pieces as needed.

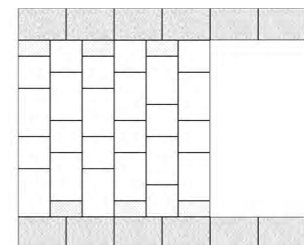
▼ Canyon Tumbled Paver



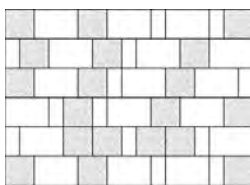
▼ Canyon Tumbled Pavers Soldier Course Application

6" x 6" and 6" x 9"
With 6" x 9" Soldier Course

6" x 3" Piece



▼ Canyon Tumbled Paver 3-Stone-Random Run



Note: This random pattern is not exact.

Description	Size HxWxD (Inches)	Sq. Ft. Unit	Weight (Pounds)	Units Pallet	Sq. Ft. Pallet	Weight Pallet
Small	6 x 3x 2.5	0.125	3.5	384	48	1,370
Medium	6 x 6 x 2.5	0.25	7	384	96	2,738
Large	6 x 9 x 2.5	0.375	11	240	90	2,690



Serano Pavers



Standard Colors



Cascade



Glacier Creek



Beechwood

Special Order



Santa Fe

Special Order

Serano's array of bold, earthy hues and sleek, smooth surfaces deliver designs that blend a hint of modern flare with the warmth of traditional landscapes.

Serano Smooth



Small



Medium

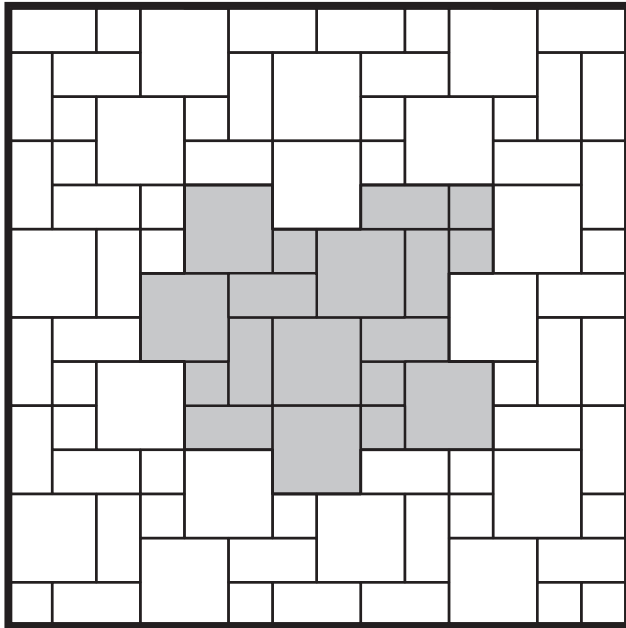


Large

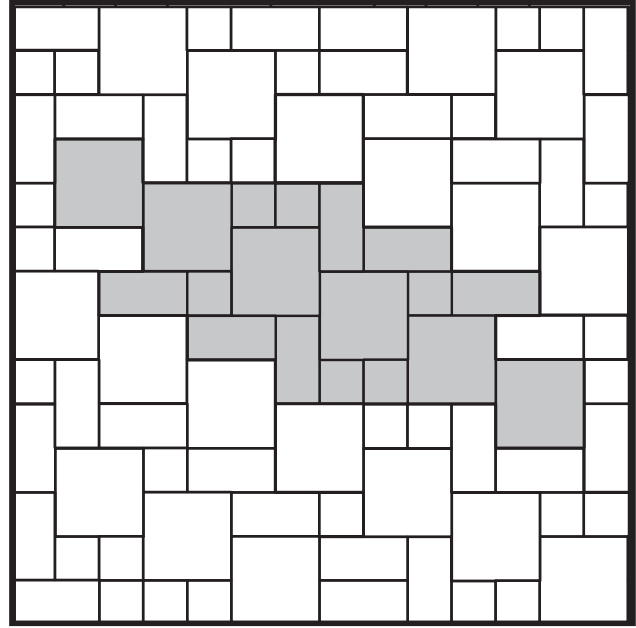


consumersconcrete.com

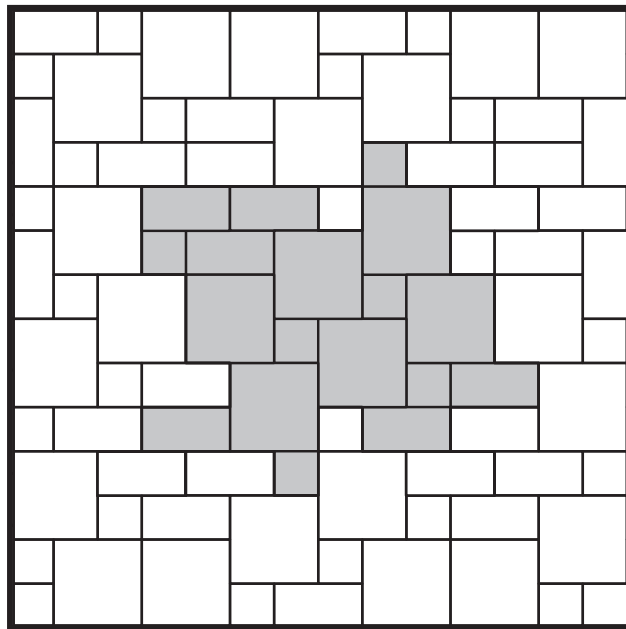
Patterns - *for Serano Pavers*



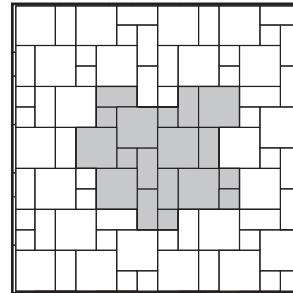
1



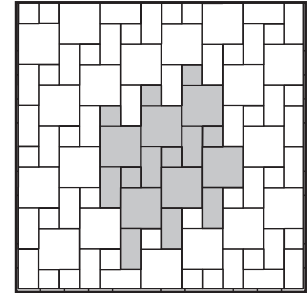
2



3



4



5

Description	Size WxDxH (Inches)	Sq. Ft. Unit	Weight (Pounds)	Units/Layer	Layers	Units/Pallet	Pallet Weight
Small	5.75 x 5.75 x 2-3/8	0.23	6.23	6			
Medium	5.75 x 11.5 x 2-3/8	0.46	12.46	6	10 (9.7 sq. ft.)	180 (97 sq. ft.)	2,680 lbs.
Large	11.5 x 11.5 x 2-3/8	0.92	24.93	6			

Heritage Pavers



Standard Colors



Antique



Granite



Country



Montana

The timeless simplicity of **Heritage Concrete Pavers** complement any design from Contemporary to Cape Cod and Craftsman to Victorian. Heritage tumbled and non-tumbled pavers will work well with Herringbone, Running Bond and Parquet patterns. Heritage Pavers offer an excellent base for your Outdoor Living space to be created on.



Tumbled
(Special Order)



Non-Tumbled



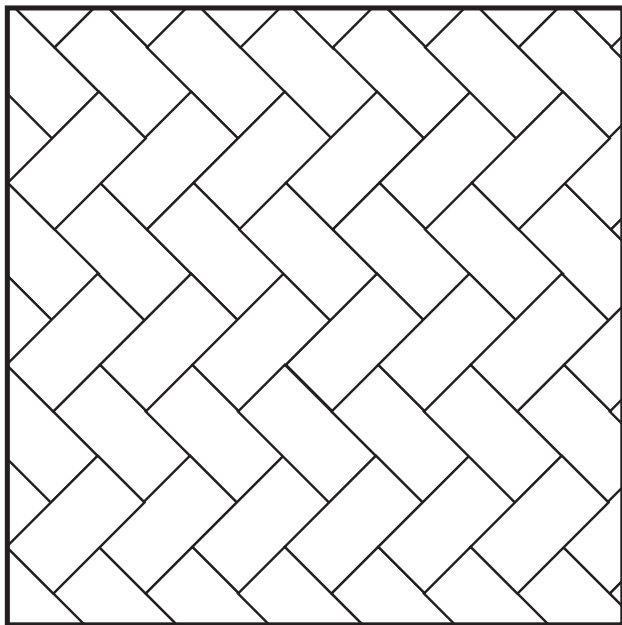
Onyx Border Paver



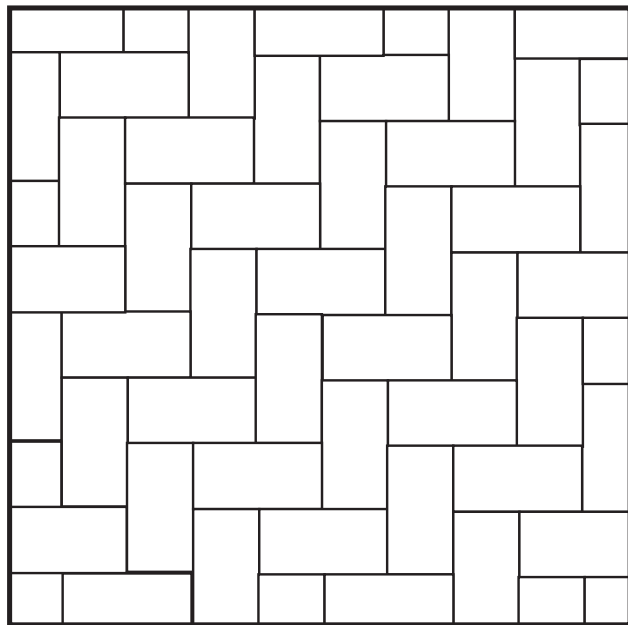
CONCRETE CORPORATION

consumersconcrete.com

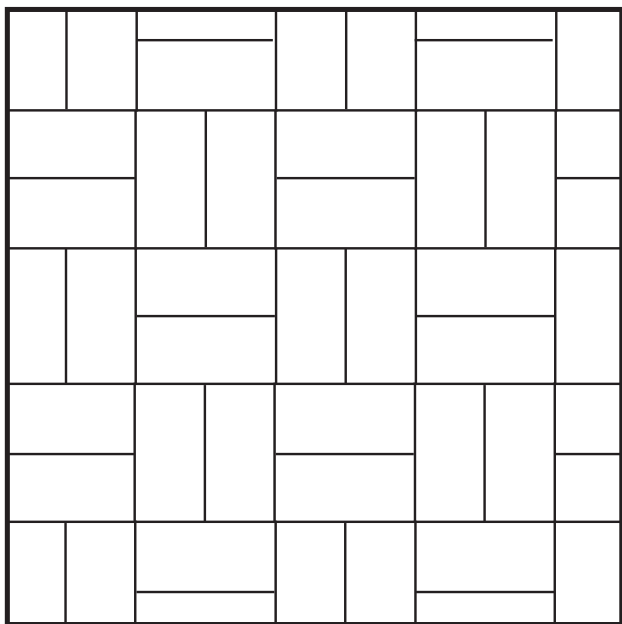
Patterns - *for Heritage Pavers*



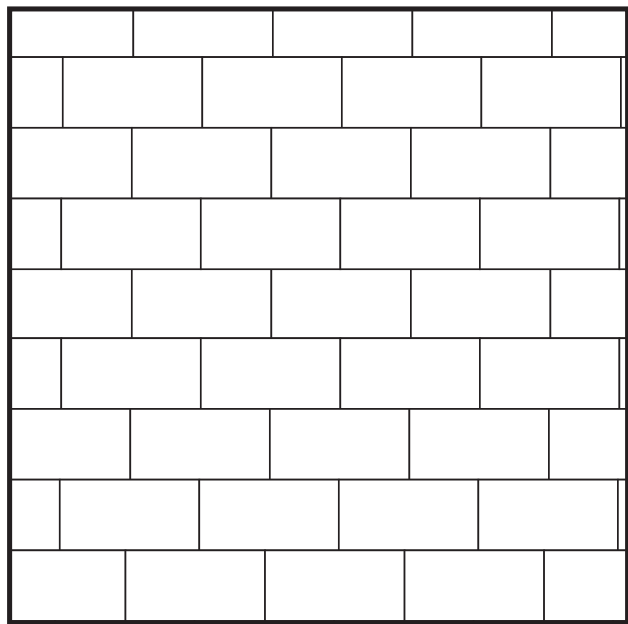
Herringbone 45°



Herringbone 90°



Parquet



Running Bond

Description	Size HxWxD (Inches)	Sq. Ft. Unit	Weight (Pounds)	Units Pallet	Sq. Ft. Pallet	Weight Pallet
Regular	4 x 8 x 2.375	0.222	6.2	480	106.6	3,000
Tumbled	4 x 8 x 2.375	0.222	6.2	480	106.6	3,000



GEOCERAMICA® PORCELAIN + PAVER

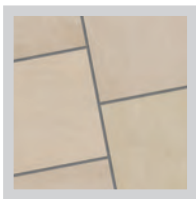
GeoCeramica combines the low-maintenance and modern aesthetic of porcelain tile with the ease of installation of concrete pavers. GeoCeramica binds a 1cm porcelain tile to a concrete paver base using a proprietary Aquaferm binding agent — truly the best of both worlds.

Easy to Install: GeoCeramica installs just like a traditional paver over a densely-graded base, open-graded base or Alliance Gator Base —saving you time and money compared to overlay installation.

- Slip-resistant porcelain tile in multiple faces,
- Available by layer
- Use roller compactor when compacting



Pearle



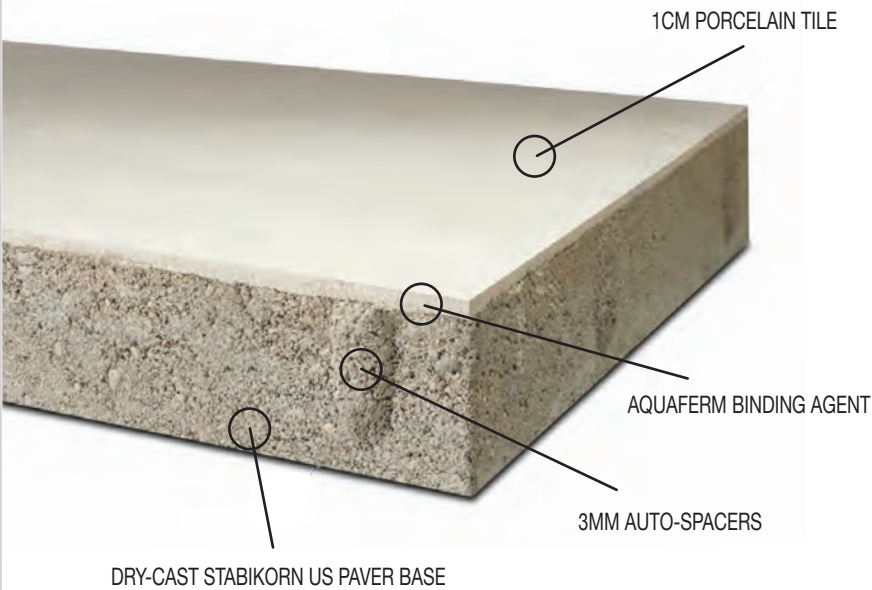
Sable



Taupe



Smoke



Size W x D x H (Inches)	Face Area Sq. Ft.	Sq. Ft. Unit	Weight (lbs)	Units/ Layers	Layers	Pallet Sq. Ft.	Weight Pallet (lbs)
24 x 24 x 1.6" H	3.88	3.88	70	2	13	26 (100.75 sq. ft)	1,840 Lbs.
Actual dimensions 23.62 x 23.62 x 1.6" H							





Consumers

CONCRETE CORPORATION

consumersconcrete.com

Outdoor Living Kits

Pages 29-33



SECTION	PAGE
Fireplaces.....	30-31
Outdoor Living & Fire Ring Kits.....	32-33



The information in this brochure is illustrative. Always consider current specifications, availability, and actual samples before making final selections.

Our Outdoor Living Kits are a collection of ready to assemble kitchens, fireplaces, and other ideas that turn your backyard into an outdoor space that is both beautiful and functional. Build your ultimate outdoor space all at once or add pieces and features over time. The modularity of our outdoor living kits makes it easy to do at the pace you want.

The kits come with everything you need to complete the project.



- Easy to read and follow step by step instructions
- Concrete blocks that are precut and sized to fit
- Cast smooth, honed tops and mantels that are hand chiseled or high grade 3cm granite tops
- Gloves and VOC compliant adhesive.



Consumers
 CONCRETE CORPORATION

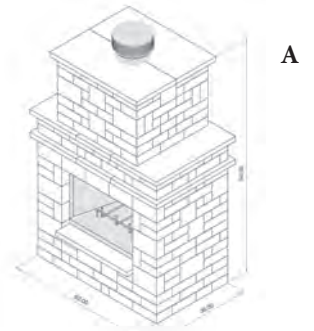
Fireplaces

necessaries
kits for outdoor living

There is nothing quite like the warmth and glow from a crackling fire in your own backyard. From the large Grand to the smaller Compact, our Fireplaces are sure to generate warm accolades from family and guests for years to come.

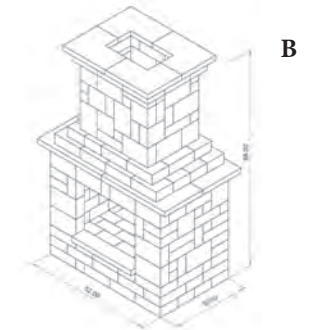
A) Grand

The Grand Fireplace is the perfect centerpiece for your outdoor living room with an aged appearance and over eight feet high. Dimensions are 60"W x 36"D x 102"H. Includes Lenox stainless steel wood burning insert, chimney pipe, and spark suppressor cap. Shown with optional wood box and hearth kit.



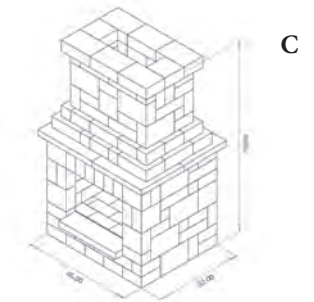
B) Victorian

The 52"w x 32"d x 89"h dimensions makes the Victorian Fireplace the center piece in any backyard. Includes protective firebrick. Add the optional hearth kit and/or wood box kit(s) to enhance the appearance and usability of this unit. Shown with optional hearth kit.



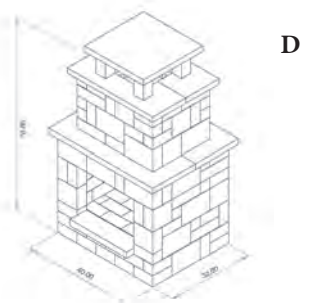
C) Colonial

The 40"w x 32"d x 70"h, includes protective firebrick, shown with optional firebox and hearth kits. Shown with optional wood box and hearth kit.



D) Compact

The 40"w x 32"d x 70"h, includes protective firebrick, shown with optional firebox and hearth kits. Shown with optional wood box and hearth kit.



Standard Colors



Antique



Country



Granite



Montana





A & B Grill may vary from picture



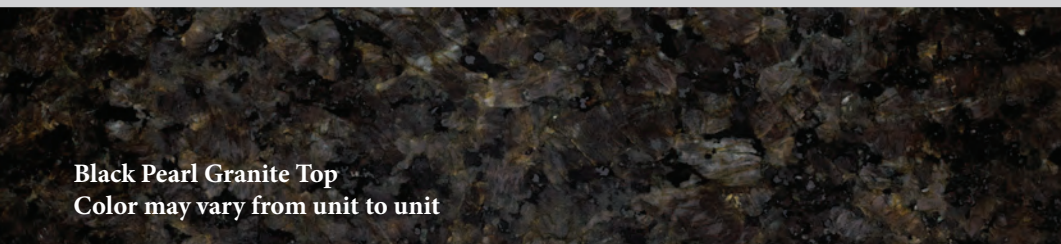
C Grill may vary from picture



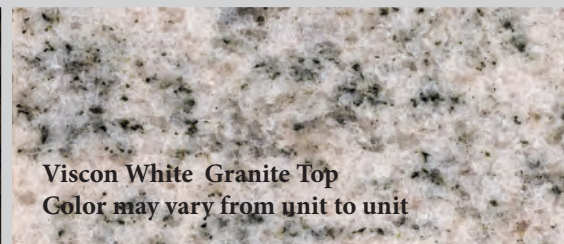
D



E



Black Pearl Granite Top
Color may vary from unit to unit



Viscon White Granite Top
Color may vary from unit to unit

Outdoor Living & Fire Ring Kits

Our outdoor living kits by Necessaries® bring the options of fire rings and bars to your project with affordable and easy to build kits. Each outdoor kit comes complete with everything you need, precut block, adhesive and easy to follow step by step assembly instructions.

No Cutting. No Guessing. No Hassles. No Problem!™

GRILLS

A & B) Summerset Sizzler Pro Grills

- 32" and 40" option available
- #443 stainless steel construction
- Natural gas or propane fuel
- LED Exterior Lights (requires 120v power)
- Twin interior cooking lights (requires 120v power)

C) Grand Island Bar Kits

- Summerset Sizzler Pro 32" Grill
- Stainless steel double doors – vented
- Indiana Limestone chiseled edge tops
- Optional refrigerator opening kit (not shown)
- Not shown: Grand Island Bar Grill Surround Kit, Grand island Bar 8' Kit

FIRE RING KITS

D) Barn Plank Fire Ring

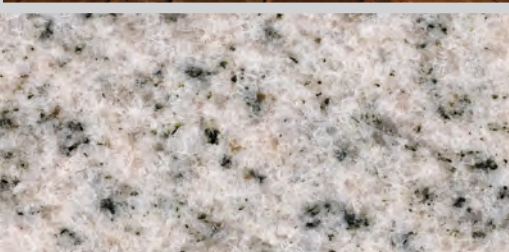
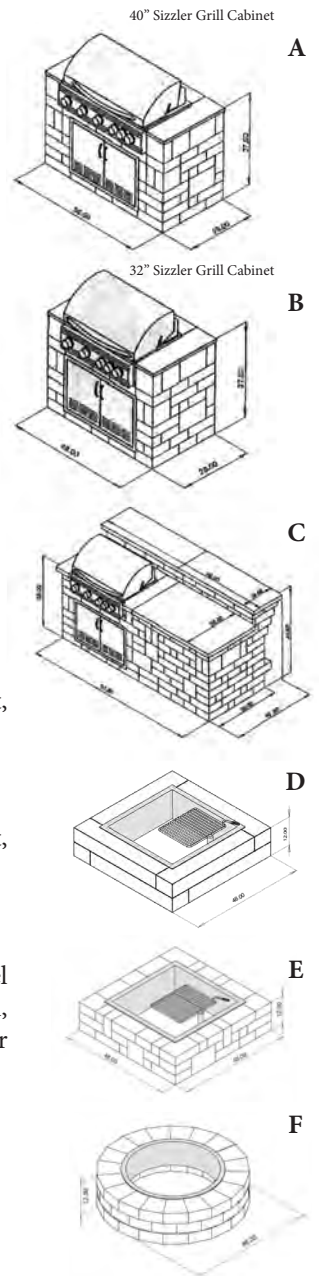
48"x 48" x 12"h, includes heavy 4 piece steel insert, swivel cooking grate optional.

E) Victorian Fire Ring

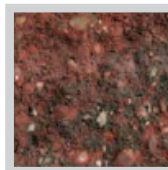
48"x 48" x 12"h, includes heavy 4 piece steel insert, swivel cooking grate optional.

F) Grand Fire Ring

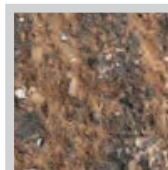
48"dia x 12"h, includes heavy steel ring insert. Swivel cooking grate, fire ring cap, EZ access spark screen, and fire ring caps are optional. Optional propane or natural gas insert available



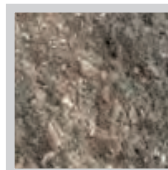
Standard Colors:



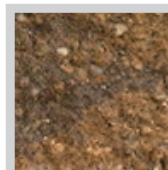
Antique



Country

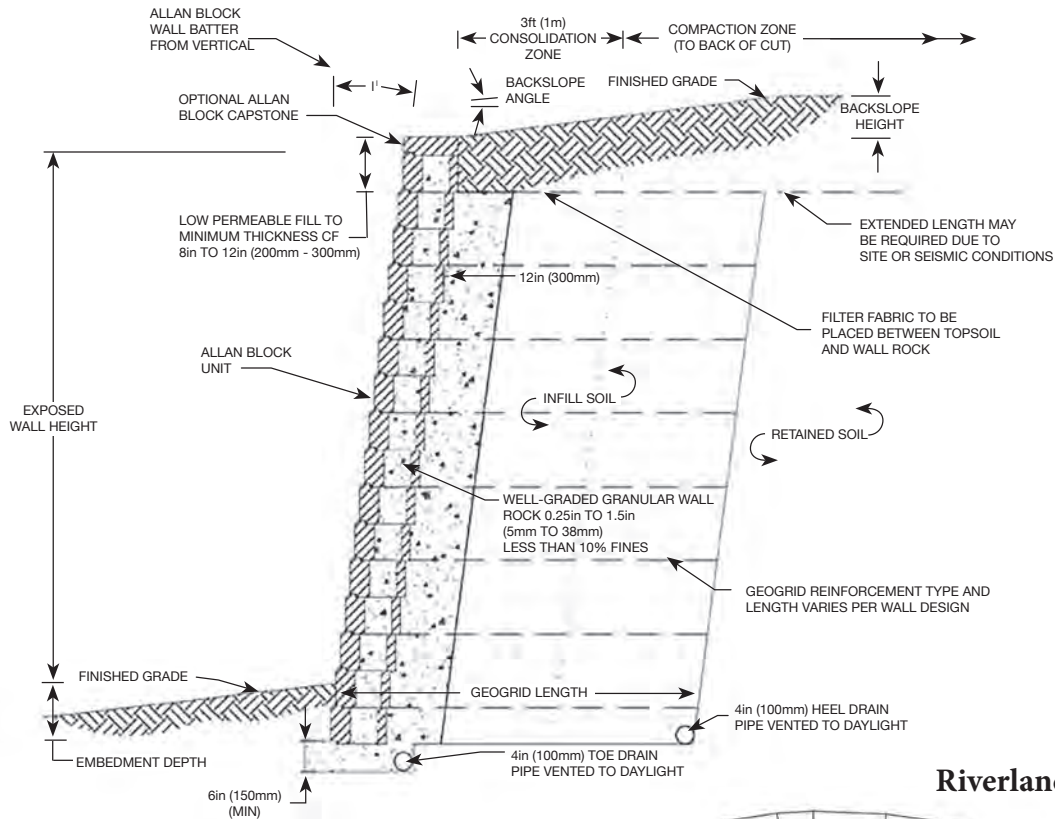


Granite



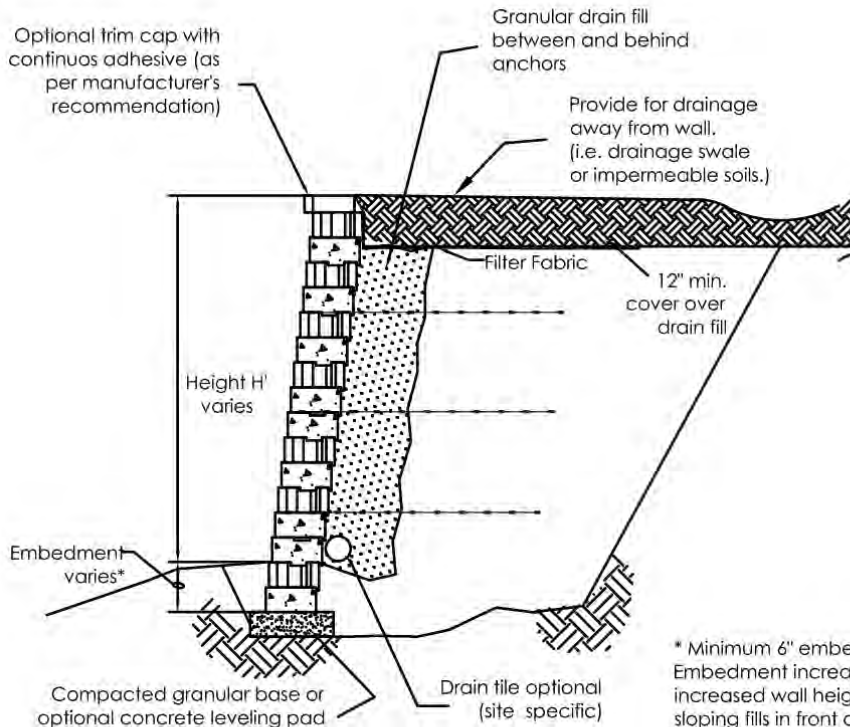
Montana

Cross Sections - Typical Reinforced Wall Sections



ROCKWOOD®

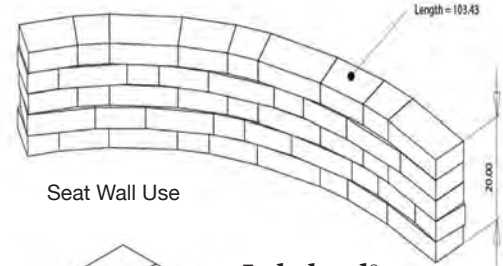
Optional trim cap with continuous adhesive (as per manufacturer's recommendation)



Typical Cross Section

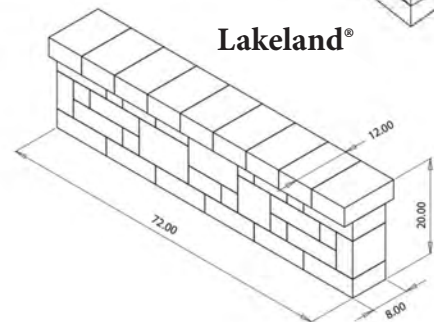
* Minimum 6" embedment. Embedment increases with increased wall heights, sloping fills in front and behind wall or poor foundation soils. contact local engineer for guidance.

Riverland®



Seat Wall Use

Lakeland®

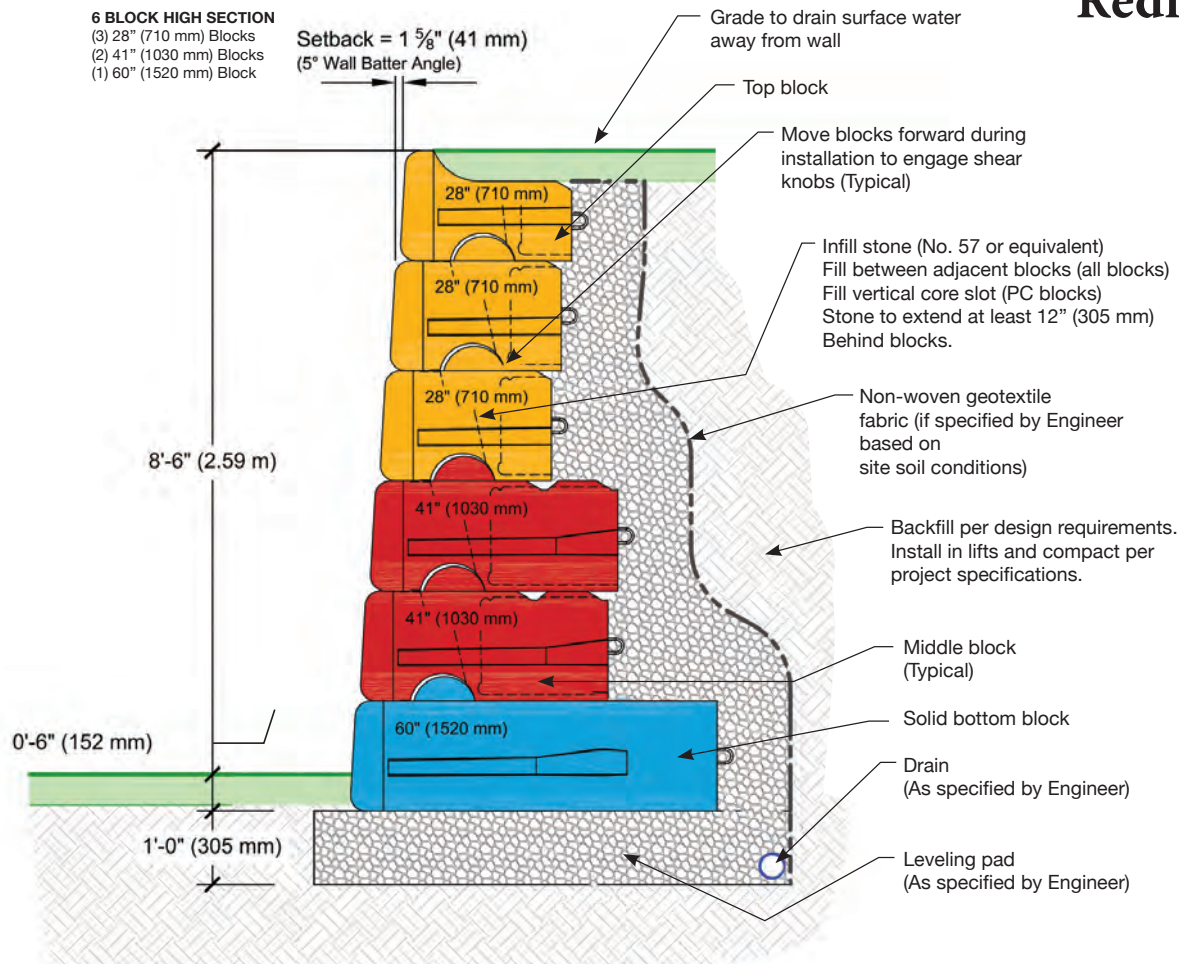


Retaining Wall Considerations:

- Soils: Clay, Sandy, Organic
- Lot Lines
- Utilities
- Permits
- Wall Height
- Slope Above the Wall
- Weight Above the Wall
- Reinforcement Grid
- Seawall Use

Reference Walls

Redi-Rock™



$\phi = 28^\circ$ | SILTY SAND or CLAYEY SAND
LOAD CONDITION A | NO LIVE LOAD SURCHARGE, NO BACK SLOPE, NO TOE SLOPE

These drawing are for reference only. Determination of the suitability and /or manner of use of any details contained in this document is the sole responsibility of the design engineer of record. Final project designs, including all construction details, shall be prepared by a licensed professional engineer using the actual conditions of the proposed site. Final wall design must address both internal and external drainage and all modes of wall stability.

About Color: The color illustrations are as accurate as photography and printing processes allow. Final selection of colors should be made from several physical samples. Shade variations are inherent in colored concrete products using natural materials. Delivered product can vary slightly from physical samples. When installing colored concrete products, units should be selected randomly from several pallets simultaneously.

About Efflorescence: Efflorescence is a whitish, powder like deposit that may sometimes appear on the surface of manufactured concrete products. It may appear immediately or within a short time after installation. Left alone, normal wear and exposure to the elements will dissipate efflorescence. Efflorescence is a normal occurrence in all cement-based products. Because it is a natural reaction to the proper hydration of concrete, we accept no responsibility or liability for replacement. If there is a need to remove the efflorescence before it naturally wears away, best results are obtained by using an efflorescence remover following proper application directions which are available from most mason supply dealers. We do not advise the use of muriatic acid. If a sealer is to be applied to the manufactured concrete products, it is recommended that any presence of efflorescence be removed prior to the sealer being applied.

2026 CATALOG

RETAINING WALLS
GARDEN WALLS
PAVERS
OUTDOOR LIVING

Distributed By



CORPORATE OFFICE

3506 Lovers Lane
Kalamazoo, 49001

consumersconcrete.com

Quality People Concrete Results